

TS FLOODED STATIONARY BATTERIES



MONOBLOCK CONSTRUCTION



Power Battery branded flooded stationary batteries are low maintenance, high performance products ideal for standby and cycling applications.

FEATURES

- Cell type: flooded lead acid
- Design life: 15-20 years at 20°C float
- Grids: Positive – tubular lead antimony/selenium
Negative – pasted lead antimony
- Container and cover: SAN, FR cover available
- Terminals: Internally threaded for M10 bolt.
- Torque for terminals: 25 Nm/222 in. lbs
- Post seal: EPDM
- Jar to cover seal: heat bonded
- Separators: PVC vipla, sleeved around the positive plate
- Intercell connectors: insulated copper
- Watering interval: 2-3 years in float applications at 25°C
- Sediment space: 0.6 inches/15 mm minimum
- Operating temperature: -20°C / -5°F to +60°C / +140°F
- Self discharge rate: < 3% per month @ 20°C / 68°F
- Electrolyte density, fully charged: 1.240
- Float voltage: 2.23 vpc
- Equalize voltage: 2.38 vpc
- Dry charged batteries: available
- Cycle capability: 80% DOD – 1200
50% DOD – 2500
25% DOD – 4000
- Racks: available in many styles, also seismic
- Spill containment: available in many designs
- Chargers: available for switchgear and UPS
- Battery monitoring: available

APPLICATIONS

- Power Generation/Switchgear
- Emergency Lighting
- Telecommunications
- Renewable Energy
- UPS
- Railway

ACCESSORIES

STANDARD

- Battery interunit and interrow connections
- Terminal hardware
- Hydrometer with holder and drip cup
- Vent mounted thermometer
- Cell numbers
- Lifting strap
- Flame arresting vent caps
- No-ox or similar grease
- Installation and operating instructions/drawing

OPTIONAL

- Racks
- Terminal lugs
- Hydrogen detector
- Eyewash
- Shower
- Electrolyte absorbent / neutralizing material
- Spill Containment systems
- Battery Monitoring systems
- Chargers

TS FLOODED STATIONARY BATTERIES



MONOBLOCK CONSTRUCTION

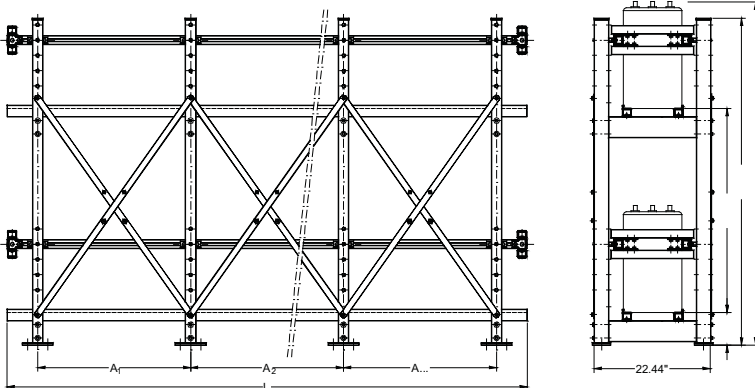
DISCHARGE RATE IN AMPERES

CELL MODEL	POS. PL	FINAL VOLTAGE: 1.75 VPC								
		1 MIN.	30 MIN.	1 HR	2	3	5	8	10	20
TSB 12100	2	118.65	70.35	50.40	33.60	26.04	18.06	12.99	10.71	6.20
TSB 12150	3	177.98	105.42	75.60	50.40	38.85	27.30	19.53	16.07	9.24
TSB 6200	4	237.20	140.60	100.80	67.62	52.19	36.23	25.98	21.42	12.39
TSB 6250	5	296.52	175.77	126.32	84.53	65.10	45.15	32.45	26.78	15.44
TSB 6300	6	355.95	210.84	151.52	101.54	78.23	54.29	38.96	32.13	18.48
FINAL VOLTAGE: 1.80 VPC										
TSB 12100	2	105.42	65.00	47.88	32.34	24.89	17.54	12.81	10.50	6.09
TSB 12150	3	158.13	97.55	71.82	48.41	37.38	26.25	19.11	15.75	9.14
TSB 6200	4	210.84	129.99	95.76	64.58	49.77	34.97	25.52	21.00	12.08
TSB 6250	5	263.55	162.54	119.70	80.75	62.27	43.68	19.11	26.25	15.12
TSB-6300	6	316.05	195.09	143.64	96.92	74.66	52.50	38.22	31.50	18.17

BATTERY SPECIFICATIONS

CELL MODEL	NOMINAL VOLTAGE	CAPACITY AT C/8 AH	I.R. MOHMS	DIMENSIONS (INCHES/MM)			WEIGHT (LBS/KGS)		ELECTROLYTE		TERMINALS MTO. NUMBER
				LENGTH	WIDTH	HEIGHT	W/ELEC.	EMPTY	WEIGHT LB/KG	VOLUME G/L	
TSB 12100	12	99	9.44	10.7/272	8.1/205	14.7/373	94.4/42.9	68.4/31.1	25.9/11.8	2.5/9.2	2
TSB 12150	12	149	6.57	15/380	8.1/205	14.7/373	159/72.3	125.8/57.2	33.2/15.1	3.3/12.2	2
TSB 6200	6	198	2.84	10.7/272	8.1/205	14.7/373	111.5/50.7	84.7/38.5	26.8/12.2	2.6/9.8	2
TSB 6250	6	247	2.27	15/380	8.1/205	14.7/373	152.9/69.5	118.8/54	34.1/15.5	3.3/12.5	2
TSB6300	6	297	1.89	15/380	8.1/205	14.7/373	163.5/74.3	130.9/59.5	32.56/14.8	3.2/11.9	2

TYPICAL TWO TIER SEISMIC RACK



18xx-1-0904

U.S.A.
Power Battery Company, Inc.
25 McLean Blvd.
Paterson, N.J. 07514-1507
Phone: (973) 523-8630
Fax: (973) 523-3023
E-mail: sales@powbat.com
Website: www.powerbattery.com

CANADA
Power Battery (Iberville) Ltd.
770 Thomas Ave.
Saint-Jean-sur-Richelieu, Québec, J2X 5E7
Phone: (450) 346-3273
Fax: (450) 346-8003
E-mail: sales@powbat.com
Website: www.powerbattery.com

UK
Power Batteries Ltd.
Premier Way, Abbey Park Industrial Estate
Romsey, Hampshire, SO51 9AO
Phone: +44 (0)1794 835900
Fax: +44 (0)1794 835910
E-mail: sales@powbat.co.uk
Website: www.powbat.co.uk