

HZB12-100 Valve Regulated Lead Acid battery.
12 year design life for stand by power applications.
12 Volts 100 Ah

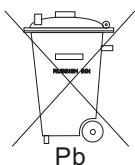
Innovative Features

- Completely maintenance free, sealed construction eliminates the need for watering
- Fully tank formed plates
- Analytical Grade electrolyte
- Spill proof / leak proof
- Valve regulated Max internal pressure 2.5 psi
- Multi-position usage
- ABS Case and cover - V0 on request
- Low self discharge
- FAA and IATA approved as non-hazardous
- Built to comply with IEC 896-2, DIN 43534, BS 6290 Pt4, Eurobat.



Specifications

Nominal Voltage	12 Volts
Nominal Capacity	100Ah (C20 @ 20 °C)
Design Life	12 Years
Operating Temperature	-20 °C to 50 °C
Grid alloy	Calcium / Tin lead alloy
Plates	Flat Pasted
Separator	Absorbant Glass Mat
Active material	Very high purity lead
Case and cover	ABS (VO on request)
Charge Voltage	Float 2.25 - 2.30 VPC @25 °C Cycling 2.35 @25 °C Max. 2.4 VPC Max ripple 0.05C (A)
Electrolyte	Sulphuric acid Analytical grade purity
Venting Valve	EPDM Rubber 1.5 to 2 psi (10.5 - 14 KPa) release pressure. Resealing at 1 psi (7 KPa)
Terminal	Insert 12mm Dia M5 thread. Epoxy sealed by extended mechanical paths
Torque setting	The recommended torque value for all types is 5-7 Nm
Cables	Connectors, cables, terminal covers on request.



Haze Battery Company keenly encourages environmental awareness; PLEASE follow guidelines for the recycling /disposal of lead.

Website: www.hazebattery.com
E mail : sales@hazebattery.com

Sealed Lead Acid 12 Volt Bloc AGM Range
PRODUCT SHEET HZB12-100

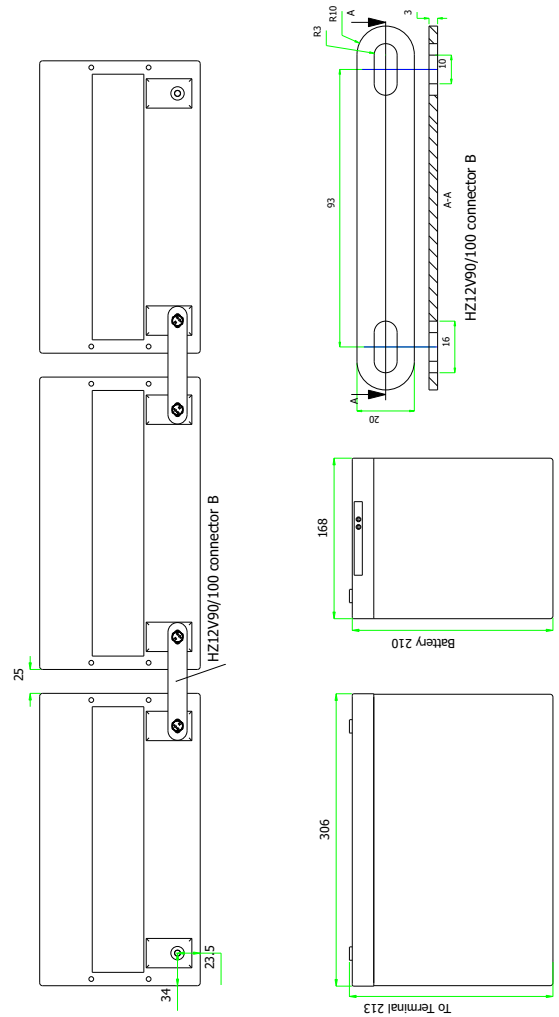
12V
AGM

Specifications

Nominal Voltage		12V	
Nominal Capacity		100 Ah	
Dimensions	Total Height (Inc. terminals)	208 mm	8.19 inches
	Length	305 mm	12.01 inches
	Width	168 mm	6.61 inches
	Weight	32 Kg	70.72 lbs

Characteristics

Capacity 20 °C (68 °F) To 1.7 volts	20 hour rate	98.6 Ah
	10 hour rate	88.2 Ah
	5 hour rate	78.1 Ah
	1 hour rate	65.0 Ah
	15 min rate	45.5 Ah
	Internal Resistance	4 mOhms
Capacity correction for Temperature Variations (C20)	40 °C (104 °F)	102%
	20 °C (68 °F)	100%
	0 °C (32 °F)	85%
	-15 °C (5 °F)	65%
Self-Discharge 20 °C (68 °F)	Capacity after 1 months storage	98%
	Capacity after 3 months storage	94%
	Capacity after 6 months storage	86%
Short Circuit Current 20 °C (68 °F)	2900	
Terminal	Standard	14mm Insert M6 thread
	Optional	Cu/Lead Flag - J Type - Auto
Charging (Constant Voltage)	Cyclic	2.35 - 2.40 VPC (20-25 °C)
	Float	2.27 - 2.30 VPC (15-25 °C)



Constant Power Discharge - Watts per Cell @20 °C

End V per Cell	5M	10M	15M	20M	25M	30M	35M	40M	45M	60M	90M	2 hr	3 hr	4 hr
1.85	422	339	283	242	210	187	169	155	143	118	83.9	65.2	45.7	35.6
1.80	506	390	313	261	222	196	176	161	149	121	85.5	66.5	46.5	35.9
1.75	533	417	324	266	229	199	179	163	151	121	85.9	67.3	46.7	36.1
1.70	559	432	331	271	231	202	181	165	153	123	87.4	68.8	47.3	36.7
1.65	587	440	338	276	234	204	182	167	154	124	88.8	69.3	47.5	-
1.60	617	448	342	278	236	206	184	168	155	125	89.7	69.7	47.7	-

Constant Amps Discharge - Amps @20 °C

End V per Cell	5M	10M	15M	20M	25M	30M	35M	40M	45M	60M	90M	2 hr	3 hr	4 hr	5 hr	8 hr	10 hr	12 hr	20 hr
1.85	227	182	151	129	111	98.8	88.8	81.3	75.1	61.3	43.5	33.7	23.4	18.1	14.9	10.0	8.23	7.06	4.59
1.80	276	212	169	140	119	105	93.8	85.2	78.9	63.5	44.6	34.5	23.9	18.4	15.1	10.3	8.51	7.31	4.77
1.75	294	229	177	144	123	107	95.7	87.0	79.9	64.0	44.9	35.0	24.2	18.6	15.2	10.3	8.56	7.34	4.78
1.70	311	239	182	148	126	109	97.4	88.5	81.3	65.0	45.9	35.9	24.5	18.9	15.6	10.6	8.82	7.56	4.93
1.65	328	244	186	151	127	110	98.2	89.4	82.0	65.8	46.7	36.3	24.7	-	-	-	-	-	-
1.60	347	250	189	153	129	112	99.1	90.0	82.7	66.3	47.2	36.5	24.8	-	-	-	-	-	-

Ampere Hour @20 °C

End V per Cell	2 hr	3 hr	4 hr	5 hr	8 hr	10 hr	12 hr	20 hr
1.85	67.3	70.2	72.5	74.7	80.2	82.3	84.7	91.9
1.80	69.0	71.8	73.6	75.5	82.4	85.1	87.7	95.4
1.75	70.0	72.5	74.3	75.8	82.7	85.6	88.1	95.68
1.70	71.8	73.6	75.8	78.1	84.8	88.2	90.8	98.55
1.65	72.5	74.0	-	-	-	-	-	-
1.60	72.9	74.4	-	-	-	-	-	-



UL Recognised
Component
MH28512

